

MODEL 3700

BOTTOM GUIDED EMERGENCY RELIEF MANHOLE COVER

OVERVIEW

The Model 3700 manhole and emergency pressure vents provide emergency pressure relief beyond that furnished by the normal pressure vent for atmospheric and low pressure tanks, as well as providing a convenient access for tank cleaning, inspection and repair. Emergency relief valves provide relief from excessive internal pressure which may be caused by an abnormal condition, such as ruptured internal heating coils or an external fire. The Model 3700 does not provide vacuum relief and therefore vacuum relief must be supplied by the normal operating vent. For vacuum relief see Valve Concepts Models 3100, 3200, 3300 and 3600 series vents.

FEATURES

Easy Inspection & Maintenance: The Model 3700 vent is a rugged design and made to last. It is light weight for easy handling, inspection and maintenance. The easy removal of the pallet assembly allows unobstructed access into the tank for inspection and repairs.

Set Point Pressure: Ranges between 0.79 and 21.81 oz/in², depending on pallet material and line size. See TABLE 1.

Air Cushion Pallet Design: Standard diaphragm material is FEP TFE. The FEP TFE diaphragm, the thickness of which is based on the vent size and the customer specified set point, forms around the seat to provide a tight seal due to the air cushion pallet design. Also available in FKM, EPDM and Buna-N.

Low-Leak Design: All units are tested to Valve Concepts, Inc. high standard for low leakage and set point accuracy prior to shipment. A certified test certificate is included with each vent verifying the set point accuracy. Seat leakage meets or exceeds API Standard 2000.

Available in (4) Sizes: 16", 18", 20" and 24" with Flat Face Flanges to mate with standard ASME, API or DIN bolting specifications.

TECHNIQUE

The manhole/emergency vent pallet provides an effective vapor-tight seal when the tank is not under emergency conditions. If the tank outbreathing requirements exceeds the capability of the normal pressure relief vent, under emergency conditions, the pallet will raise to allow vapor to escape, preventing damage to the tank due to excess pressure. The manhole/emergency vent pallet is bottom guided so that when the excess pressure is relieved the pallet will reseat to again provide a vapor-tight seal.



MODEL 3700



LINE SIZES AVAILABLE

16" (DN400), 18" (DN450),
20" (DN500), 24" (DN600)



END CONNECTIONS

FLANGED



COMMON APPLICATIONS

ATMOSPHERIC & LOW-PRESSURE
TANKS



DESIGN PRESSURE

MULTIPLE SET PRESSURE
RANGES AVAILABLE

Алматы (7273)495-231
Ангарск (3955)60-70-56
Архангельск (8162)63-90-72
Астрахань (8512)99-46-04
Барнаул (3852)73-04-60
Белгород (4722)40-23-64
Благовещенск (4162)22-76-07
Брянск (4832)59-03-52
Владивосток (423)249-28-31
Владикавказ (8672)28-90-48
Владимир (4922)49-43-18
Волгоград (844)278-03-48
Вологда (8172)26-41-59
Воронеж (473)204-51-73
Екатеринбург (343)384-55-89

Иваново (4932)77-34-06
Ижевск (3412)26-03-58
Иркутск (395)279-98-46
Казань (843)206-01-48
Калининград (4012)72-03-81
Калуга (4842)92-23-67
Кемерово (3842)65-04-62
Киров (8332)68-02-04
Коломна (4966)23-41-49
Кострома (4942)77-07-48
Краснодар (861)203-40-90
Красноярск (391)204-63-61
Курск (4712)77-13-04
Курган (3522)50-90-47
Липецк (4742)52-20-81

Магнитогорск (3519)55-03-13
Москва (495)268-04-70
Мурманск (8152)59-64-93
Набережные Челны (8552)20-53-41
Нижний Новгород (831)429-08-12
Новокузнецк (3843)20-46-81
Ноябрьск (3496)41-32-12
Новосибирск (383)227-86-73
Омск (4862)21-46-40
Оренбург (3532)37-68-04
Пенза (8412)22-31-16
Петрозаводск (8142)55-98-37
Псков (8112)59-10-37
Пермь (342)205-81-47

Ростов-на-Дону (863)308-18-15
Рязань (4912)46-61-64
Самара (846)206-03-16
Санкт-Петербург (812)309-46-40
Саратов (845)249-38-78
Севастополь (8682)22-31-93
Саранск (8342)22-96-24
Симферополь (3652)67-13-56
Смоленск (4812)29-41-54
Сочи (862)225-72-31
Ставрополь (8652)20-65-13
Сургут (3462)77-98-35
Сыктывкар (8212)25-95-17
Тамбов (4752)50-40-97
Тверь (4822)63-31-35

Тольятти (8482)63-91-07
Томск (3822)98-41-53
Тула (4872)33-79-87
Тюмень (3452)66-21-18
Ульяновск (8422)24-23-59
Улан-Удэ (3012)59-97-51
Уфа (347)229-48-12
Хабаровск (4212)92-98-04
Чебоксары (8352)28-53-07
Челябинск (351)202-03-61
Череповец (8202)49-02-64
Чита (3022)38-34-83
Якутск (4112)23-90-97
Ярославль (4852)69-52-93

Россия +7(495)268-04-70

Казахстан +7(7172)727-132

Киргизия +996(312)96-26-47

STANDARD/GENERAL SPECIFICATIONS

Gaskets: Standard: TFE/TFE Paste.

Painting: Standard: All non-corrosion resistant parts to be painted with corrosion resistant epoxy paint per Cashco Spec #S-1777.

Diaphragm FEP-TFE:
Temperature -400° to 400° F (-240° to 204°C)
Limits: Fluorocarbon Elastomer – (FKM):
 -20° to 400° F (-28° to 204°C)
 Buna-N (Nitrile-NBR):
 -30° to 200° F (-34° to 93°C)
 EPDM (Ethylenepropylene):
 -40° to 225° F (-40° to 107°C)

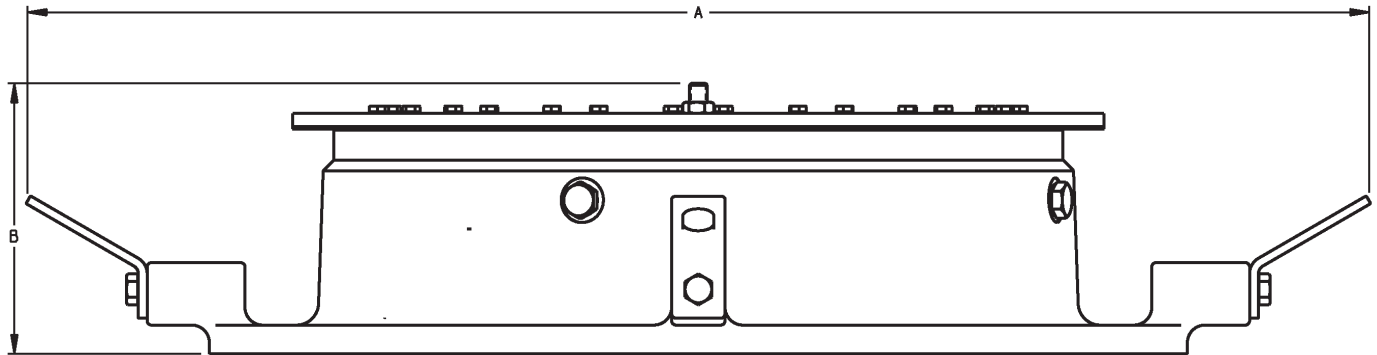
Set Point Pressure Range:

MATERIALS OF CONSTRUCTION	
Body Flange - Seat	Pallet
Aluminum	Aluminum
CS	Aluminum
CS	304 SST
304 SST	304 SST
316 SST	316 SST
Derakane® 470	Derakane® 470
Hetron® 800	Hetron® 800
Derakane, Furan and Hetron are Registered trademarks of Ashland Inc. Hetron is now offered as an equal replacement to Furan.	

TABLE 1				
Standard Pressure Settings (oz/in ²)				
Line Size	Pallet Material			
	Alum		SST	
	Min	Max	Min	Max
16"	1.2	20.23	2.69	21.81
18"	1.09	16.32	2.55	17.78
20"	1.02	16.02	2.42	17.42
24"	0.8	16.29	2.29	17.79

The contents of this publication are presented for informational purposes only, and while every effort has been made to ensure their accuracy, they are not to be construed as warranties or guarantees, express or implied, regarding the products or services described herein or their use or applicability. We reserve the right to modify or improve the designs or specifications of such product at any time without notice. Cashco, Inc. does not assume responsibility for the selection, use or maintenance of any product. Responsibility for proper selection, use and maintenance of any Cashco, Inc. product remains solely with the purchaser.

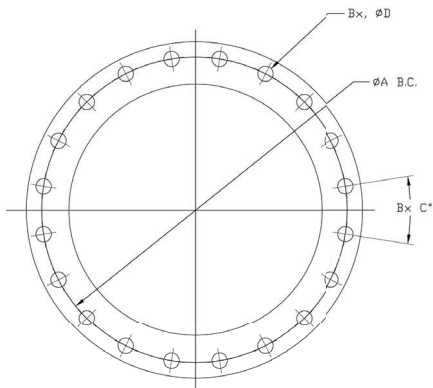
DIMENSIONS



DIMENSIONS - in			Weights	
ALL MATERIALS			lbs *	
Size	A	B	CS/SST	ALUM
16"	31.78	7.59	177	65
18"	33.28	7.59	194	71
20"	37.78	7.59	197	72
24"	42.78	7.59	244	89
DN	mm		kgs	
(400)	807	193	80	29
(450)	845	193	88	32
(500)	960	193	89	33
(600)	1087	193	111	40

* At Minimum Set Point

DIMENSIONS - in					
150# (PN16) FF Flange & Bolting Specification					
SIZE	ØA B.C.	B (Qty)	C°	ØD	Flange OD
ASME) 16"	21.25	16	22.5°	1.13	23.50
ASME) 18"	22.75	16	22.5°	1.25	25.00
(ASME) 20"	25.0	20	18°	1.25	27.50
(ASME) 24"	29.5	20	18°	1.375	32.00
(API) 20"	23.5	16	22.5°	0.75	26.00
(API) 24"	27.5	20	18°	0.75	30.00
(DIN) DN400	20.67	16	22.5°	1.18	22.83
(DIN) DN450	23.03	20	22.5°	1.18	25.20
(DIN) DN500	25.6	20	18°	1.30	28.15
(DIN) DN600	30.3	20	18°	1.42	33.07



DIMENSIONS - mm					
DN	ØA B.C.	B (Qty)	C°	ØD	Flange OD
(ASME) 400	540	16	22.5°	28.7	597
(ASME) 450	552	16	22.5°	31.8	635
(ASME) 500	635	20	18°	31.7	698
(ASME) 600	749	20	18°	34.9	813
(API) 500	597	16	22.5°	19.0	660
(API) 600	698	20	18°	19.0	762
(DIN) DN400	525	16	22.5°	30	580
(DIN) DN450	585	20	22.5°	30	640
(DIN) DN500	650	20	18°	33	715
(DIN) DN600	770	20	18°	36	840

3700 Series (Bottom Guided) PRODUCT CODE 10/09/20

Last 6 Characters reserved for SPQ drawing numbers assigned by Cashco Inc.
(Format as - # # # # #)



POSITION 3 - FLANGE - BOLTING PATTERN	
To Specification	CODE
ASME 150# FF	0
API 650 - 150# FF *	P
DIN PN16 FF	D

* Not Available Sizes 16" or 18"

POSITION 4 - SIZE		
Inch	(DN)	CODE
16"	(400)	F
18"	(450)	C
20"	(500)	D
24"	(600)	E

POSITION 5 - BODY FLANGE - SEAT / PALLET MATERIALS	
MATERIAL	CODE
ALUM / ALUM	A
CS / ALUM	V
CS / 304 SST	W
304 SST / 304 SST	C
316 SST / 316SST	S
Derakane 470 (SST Studs)	F
Derakane 470 (Hast C Studs)	H
Hetron 800 (SST Studs)	G
Hetron 800 (Hast C Studs)	J

POSITION 7 - DIAPHRAGM MATERIALS	
Diaphragm Material	TFE/TFE Paste (Std)
	CODE
FEP TFE (Std)	A
Buna-N	B
EPDM	D
FKM	F

POSITION 10 - WEIGHT MATERIAL	
Material	CODE
SST	S
Encapsulated weight Option For FRP Body Material ONLY	E

*** For information on ATEX see pages 12 & 13 on the IOM.**

SEE TABLE 1 (pg 2) for Min and Max Set Point Pressures.

Алматы (7273)495-231
Ангарск (3955)60-70-56
Архангельск (8182)63-90-72
Астрахань (8512)99-46-04
Барнаул (3852)73-04-60
Белгород (4722)40-23-64
Благовещенск (4162)22-76-07
Брянск (4832)59-03-52
Владивосток (423)249-28-31
Владикавказ (8672)28-90-48
Владимир (4922)49-43-18
Волгоград (844)278-03-48
Вологда (8172)26-41-59
Воронеж (473)204-51-73
Екатеринбург (343)384-55-89

Иваново (4932)77-34-06
Ижевск (3412)26-03-58
Иркутск (395)279-98-46
Казань (843)206-01-48
Калининград (4012)72-03-81
Калуга (4842)92-23-67
Кемерово (3842)65-04-62
Киров (8332)68-02-04
Коломна (4966)23-41-49
Кострома (4942)77-07-48
Краснодар (861)203-40-90
Красноярск (391)204-63-61
Курск (4712)77-13-04
Курган (3522)50-90-47
Липецк (4742)52-20-81

Магнитогорск (3519)55-03-13
Москва (495)268-04-70
Мурманск (8152)59-64-93
Набережные Челны (8552)20-53-41
Нижегород (831)429-08-12
Новокузнецк (3843)20-46-81
Ноябрьск (3496)41-32-12
Новосибирск (383)227-86-73
Омск (3812)21-46-40
Орел (4862)44-53-42
Оренбург (3532)37-68-04
Пенза (8412)22-31-16
Петрозаводск (8142)55-98-37
Псков (8112)59-10-37
Пермь (342)205-81-47

Ростов-на-Дону (863)308-18-15
Рязань (4912)46-61-64
Самара (846)206-03-16
Санкт-Петербург (812)309-46-40
Саратов (845)249-38-78
Севастополь (8692)22-31-93
Саранск (8342)22-96-24
Симферополь (3652)67-13-56
Смоленск (4812)29-41-54
Сочи (862)225-72-31
Ставрополь (8652)20-65-13
Сургут (3462)77-98-35
Сыктывкар (8212)25-95-17
Тамбов (4752)50-40-97
Тверь (4822)63-31-35

Тольятти (8482)63-91-07
Томск (3822)98-41-53
Тула (4872)33-79-87
Тюмень (3452)66-21-18
Ульяновск (8422)24-23-59
Улан-Удэ (3012)59-97-51
Уфа (347)229-48-12
Хабаровск (4212)92-98-04
Чебоксары (8352)28-53-07
Челябинск (351)202-03-61
Череповец (8202)49-02-64
Чита (3022)38-34-83
Якутск (4112)23-90-97
Ярославль (4852)69-52-93

Россия +7(495)268-04-70

Казахстан +7(7172)727-132

Киргизия +996(312)96-26-47

<https://cashco.nt-rt.ru/> || coc@nt-rt.ru