

CONSTRUCTION

Housing Material: The Model 4600 vent is a rugged design made to last. Available in Aluminum, Carbon Steel, or 316 SST.

Sizes - Connections. Available in Sizes 2" through 6". CS and SST Vents have Raised Face Flange, Aluminum vents have Flat Face Flange to mate with standard ASME 150# flange connections.

Pallet Diaphragm Material: FEP TFE is Standard. Also available Buna-N, EPDM or Fluorocarbon Elastomer (FKM).

SPECIAL FEATURES

Modular. The Model 4600 spring-loaded side mounted vacuum vent is part of the Valve Concepts, Inc. modular vent product line. The 4600 is used in the pressure / vacuum vent with pipe-away and the pressure only vent with pipe-away. These vents can either be direct acting (weight-loaded or spring-loaded) or pilot operated.

Maintains Accurate Vacuum Settings. The minimum vacuum setting available is 1.0 psig. Maximum vacuum setting is 15 psig. As with every vent supplied by Valve Concepts, Inc. a Certified Test Certificate is included verifying the accuracy of both set point and leakage rate. On all direct acting vents supplied by Valve Concepts, Inc. the leakage is less than 1 SCFH at 90% of the customer specified set point. The standard unit is suitable for intermittent back pressures of 50 psig. Higher back pressure ratings are available on request.

Condensate Drainage. Self-draining housing body and drip rings keep condensate away from seating surfaces, preventing freezing, binding and clogging.

Air-Cushioned Seating. Air-cushion seating for low evaporation loss. The pallets have outer guiding and center stabilizing stem to provide self alignment and tight seating.



Model 4600
Spring-Loaded
Side-Mounted Vacuum Relief Vent

OBJECTIVE

The Model 4600 spring-loaded vacuum relief vents are intended for use on low pressure tanks, vapor recovery systems and process systems where higher vacuum relief is required.

TECHNIQUE

The spring-loaded pallet in the vent housing allows the intake of air necessary to maintain the tank pressure within the permissible vacuum limit to avoid damage to the tank. Once the vacuum condition is satisfied and the pressure is within the permissible limits the spring-loaded pallet closes. The Model 4600 virtually eliminates the intake of air except during normal tank in breathing.

MATERIALS OF CONSTRUCTION		
Series	Housing	Pallet
4600CS	CS	316 SST
4600SST	316 SST	316 SST
4600A	Aluminum	316 SST

Алматы (7273)495-231
Ангарск (3955)60-70-56
Архангельск (8182)63-90-72
Астрахань (8512)99-46-04
Барнаул (3852)73-04-60
Белгород (4722)40-23-64
Благовещенск (4162)22-76-07
Брянск (4832)59-03-52
Владивосток (423)249-28-31
Владикавказ (8672)28-90-48
Владимир (4922)49-43-18
Волгоград (844)278-03-48
Волгодла (8172)26-41-59
Воронеж (473)204-51-73
Екатеринбург (343)384-55-89

Иваново (4932)77-34-06
Ижевск (3412)26-03-58
Иркутск (395)279-98-46
Казань (843)206-01-48
Калининград (4012)72-03-81
Калуга (4842)92-23-67
Кемерово (3842)65-04-62
Киров (8332)68-02-04
Коломна (4966)23-41-49
Кострома (4942)77-07-48
Краснодар (861)203-40-90
Красноярск (391)204-63-61
Курск (4712)77-13-04
Курган (3522)50-90-47
Липецк (4742)52-20-81

Магнитогорск (3519)55-03-13
Москва (495)268-04-70
Мурманск (8152)59-64-93
Набережные Челны (8552)20-53-41
Нижегород (831)429-08-12
Новокузнецк (3843)20-46-81
Новыйорск (3496)41-32-12
Новосибирск (383)227-86-73
Омск (3812)21-46-40
Орел (4862)44-53-42
Оренбург (3532)37-68-04
Пенза (8412)22-31-16
Петрозаводск (8142)55-98-37
Псков (8112)59-10-37
Пермь (342)205-81-47

Ростов-на-Дону (863)308-18-15
Рязань (4912)46-61-64
Самара (846)206-03-16
Санкт-Петербург (812)309-46-40
Саратов (845)249-38-78
Севастополь (8692)22-31-93
Саранск (8342)22-96-24
Симферополь (3652)67-13-56
Смоленск (4812)29-41-54
Сочи (862)225-72-31
Ставрополь (8652)20-65-13
Сургут (3462)77-98-35
Сыктывкар (8212)25-95-17
Тамбов (4752)50-40-97
Тверь (4822)63-31-35

Тольятти (8482)63-91-07
Томск (3822)98-41-53
Тула (4872)33-79-87
Тюмень (3452)66-21-18
Ульяновск (8422)24-23-59
Улан-Удэ (3012)59-97-51
Уфа (347)229-48-12
Хабаровск (4212)92-98-04
Чебоксары (8352)28-53-07
Челябинск (351)202-03-61
Череповец (8202)49-02-64
Чита (3022)38-34-83
Якутск (4112)23-90-97
Ярославль (4852)69-52-93

Россия +7(495)268-04-70

Казахстан +7(7172)727-132

Киргизия +996(312)96-26-47

STANDARD/GENERAL SPECIFICATIONS

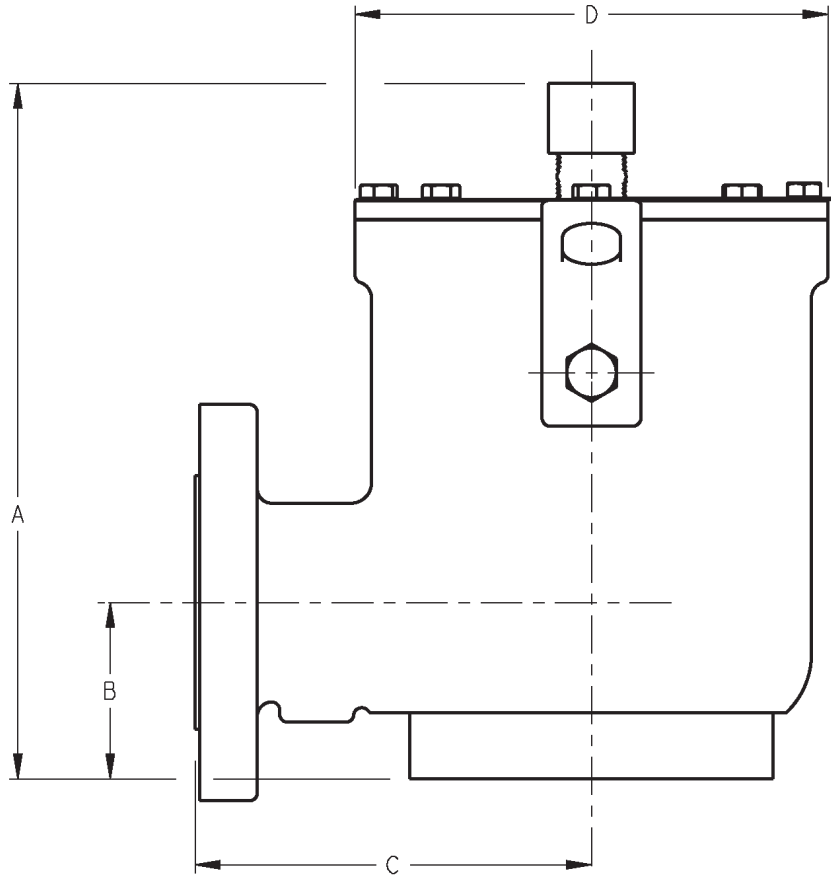
Gaskets: Standard: TFE/TFE Rope

Painting: Standard: Exterior coating will be a combination of Cashco Paint Specs #S-1777 epoxy and #S-1743 powder coated. Fasteners, seat surfaces and corrosion resistant parts excluded.

Diaphragm
Temperature
Limits:

FEP-TFE:
-400° to 400° F (-240° to 204°C)
Fluorocarbon Elastomer – (FKM):
-20° to 400° F (-28° to 204°C)
Buna-N (Nitrile-NBR):
-30° to 200° F (-34° to 93°C)
EPDM (Ethylenepropylene):
-40° to 225° F (-40° to 107°C)

DIMENSIONS



ENGLISH Units - in Aluminum, Carbon Steel & Stainless Steel Body					Weight lbs.	
SIZE In	A	B	C	D (diam.)	Alum	CS/SST
2"	10.53"	2.67"	6.00"	7.28"	19	47
3"	12.10"	3.31"	6.50"	8.12"	21	57
4"	14.16"	3.87"	8.00"	10.88"	33	91
6"	15.52"	4.75"	9.00"	12.51"	46	129

METRIC Units - (mm) Aluminum, Carbon Steel & Stainless Steel Body					Weight kg.	
SIZE (DN)	A	B	C	D (diam.)	Alum	CS/SST
(50)	267	68	152	185	9	21
(80)	307	84	165	206	10	26
(100)	367	98	203	276	15	41
(150)	394	121	229	318	21	59

The contents of this publication are presented for informational purposes only, and while every effort has been made to ensure their accuracy, they are not to be construed as warranties or guarantees, express or implied, regarding the products or services described herein or their use or applicability. We reserve the right to modify or improve the designs or specifications of such product at any time without notice. Cashco, Inc. does not assume responsibility for the selection, use or maintenance of any product. Responsibility for proper selection, use and maintenance of any Cashco, Inc. product remains solely with the purchaser.

4600 Series PRODUCT CODE

02/07/20

Last 6 Characters reserved for SPQ drawing numbers assigned by Cashco Inc.
(Format as - # # # # #)



POSITION 3 - PALLET DESIGN	
Material	CODE
STD	0
Intermittent Back Pressure 50 psig Max.	B

POSITION 4 - FLANGE - SIZE			
ASME INCH	CODE	DIN FLANGES DN (rating)	CODE
2"	2	50 (PN16)	H
3"	3	80 (PN16)	J
4"	4	100 (PN16)	K
6"	6	150 (PN16)	L

POSITION 5 - BODY / TRIM MATERIALS		
MATERIAL	W/O Flame-screen	W/ Flame-screen
	CODE	CODE
ALUM/SST	A	B
CS/SST	C	D
SST/SST	S	T

POSITION 7 - DIAPHRAGM MATERIALS	
DIAPHRAGM	CODE
FEP TFE (Std.)	A
Buna-N	B
EPDM	D
FKM	F

POSITION 8 - VACUUM SET POINT		
Spring Loaded Range		CODE
psig	barg	
1 - 4	.06 - .27	2
> 4 - 6	> .27 - .41	3
> 6 - 8	> .41 - .55	4
> 8 - 10	> .55 - .68	5
> 10 - 12	> .68 - .83	6
> 12 - 13	> .83 - .89	7
> 13 - 15	> .89 - 1.03	8

Алматы (7273)495-231
Ангарск (3955)60-70-56
Архангельск (8182)63-90-72
Астрахань (8512)99-46-04
Барнаул (3852)73-04-60
Белгород (4722)40-23-64
Благовещенск (4162)22-76-07
Брянск (4832)59-03-52
Владивосток (423)249-28-31
Владикавказ (8672)28-90-48
Владимир (4922)49-43-18
Волгоград (844)278-03-48
Вологда (8172)26-41-59
Воронеж (473)204-51-73
Екатеринбург (343)384-55-89

Иваново (4932)77-34-06
Ижевск (3412)26-03-58
Иркутск (395)279-98-46
Казань (843)206-01-48
Калининград (4012)72-03-81
Калуга (4842)92-23-67
Кемерово (3842)65-04-62
Киров (8332)68-02-04
Коломна (4966)23-41-49
Кострома (4942)77-07-48
Краснодар (861)203-40-90
Красноярск (391)204-63-61
Курск (4712)77-13-04
Курган (3522)50-90-47
Липецк (4742)52-20-81

Магнитогорск (3519)55-03-13
Москва (495)268-04-70
Мурманск (8152)59-64-93
Набережные Челны (8552)20-53-41
Нижний Новгород (831)429-08-12
Новокузнецк (3843)20-46-81
Ноябрьск (3496)41-32-12
Новосибирск (383)227-86-73
Омск (3812)21-46-40
Орел (4862)44-53-42
Оренбург (3532)37-68-04
Пенза (8412)22-31-16
Петрозаводск (8142)55-98-37
Псков (8112)59-10-37
Пермь (342)205-81-47

Ростов-на-Дону (863)308-18-15
Рязань (4912)46-61-64
Самара (846)206-03-16
Санкт-Петербург (812)309-46-40
Саратов (845)249-38-78
Севастополь (8692)22-31-93
Саранск (8342)22-96-24
Симферополь (3652)67-13-56
Смоленск (4812)29-41-54
Сочи (862)225-72-31
Ставрополь (8652)20-65-13
Сургут (3462)77-98-35
Сыктывкар (8212)25-95-17
Тамбов (4752)50-40-97
Тверь (4822)63-31-35

Тольятти (8482)63-91-07
Томск (3822)98-41-53
Тула (4872)33-79-87
Тюмень (3452)66-21-18
Ульяновск (8422)24-23-59
Улан-Уда (3012)59-97-51
Уфа (347)229-48-12
Хабаровск (4212)92-98-04
Чебоксары (8352)28-53-07
Челябинск (351)202-03-61
Череповец (8202)49-02-64
Чита (3022)38-34-83
Якутск (4112)23-90-97
Ярославль (4852)69-52-93

Россия +7(495)268-04-70

Казахстан +7(7172)727-132

Киргизия +996(312)96-26-47

<https://cashco.nt-rt.ru/> || coc@nt-rt.ru